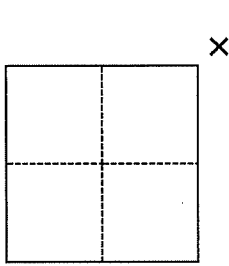


CORNER RECORD

Agency Index CR-22-021⁶
Document Number APN 070-201-44 B

City of KENTFIELD County of MARIN, California
Brief Legal Description INT OF SIR FRANCIS DRAKE BLVD & MANOR RD, SHOWN ON 14 OS 12



CORNER TYPE

- Government Corner
- Meander
- Rancho
- Control
- Property
- Other

Date of Survey October 14, 2021

COORDINATES (Optional)

N. _____ E. _____
 Elevation _____
 Units Metric U.S. Survey Foot
 Horizontal Datum _____
 Zone _____ Epoch Date _____
 Vertical Datum _____
 Complies with Public Resources Code §§8801-8819
 Complies with Public Resources Code §§8890-8902

- PLS Act Ref.: 8765(d) 8771 8773 Other:
- Corner/Monument: Left as found Established Rebuilt Pre-Construction
 Found and tagged Reestablished Referenced Post-Construction

Narrative of corner identified and monument as found, set, reset, replaced, or removed:
 See sheet #2 for description(s):

SURVEYOR'S STATEMENT

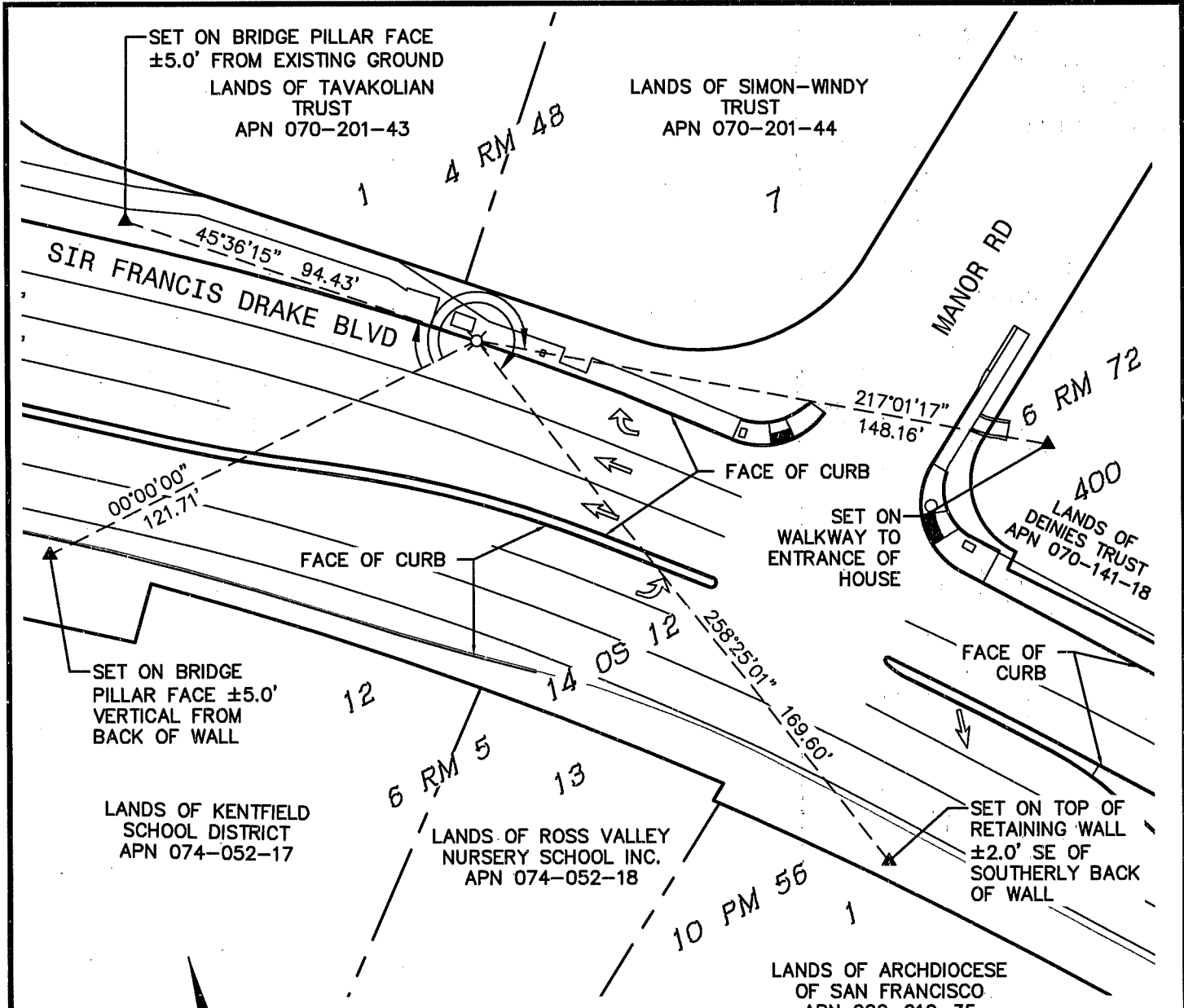
This Corner Record was prepared by me or under my direction in conformance with
 the Professional Land Surveyors' Act on October 14, 2021
 Signed [Signature] P.L.S. or R.C.E. No. 8940



COUNTY SURVEYOR'S STATEMENT

This Corner Record was received 03/06/22
 and examined and filed 03/16/22
 Signed [Signature] P.L.S. or R.C.E. No. 9292
 Title Deputy
 County Surveyor's Comment _____

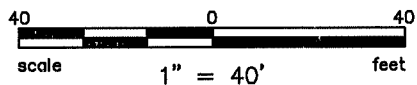




LEGEND

- ⌵ SET NAIL & TAG "PLS 8806"
- ▲ FOUND REFERENCE MONUMENT, MAG NAIL & TAG STAMPED "RM LS8940"

- MONUMENT TIE
- RIGHT OF WAY
- PROPERTY LINE



ENGINEERS / SURVEYORS / PLANNERS
 4040 CIVIC CENTER DR, #530 SAN RAFAEL, CA 94903
 (415) 930-7960 FAX: (415) 930-7979

Plot Nov 12, 2021 at 1:35pm